

# RESIDENTIAL OVERFLOW

UM PARKING & TRANSPORTATION  
PARKING@OLEMISS.EDU  
(662) 915-7235



## Where Can I Park?

With the Residential Overflow permit, you are allowed to park in any Commuter Red zone. The Jackson Avenue Center is the preferred zone for this permit, based on proximity to the Residential area, as well as consistent and timely bus service.

Residential Overflow permit holders are restricted to the Commuter Red zone, Monday – Friday, 7:30 AM – 5:00 PM. After 5 PM on weekdays and on the weekends, you may park in any parking zone in a legal, non-reserved space.

**On Football gameday Saturdays, you may park ONLY in other student residential zones on campus.**

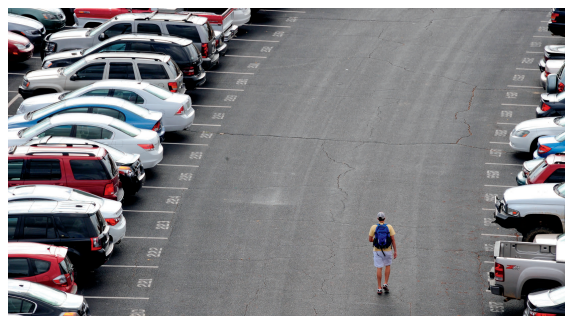


## ADDITIONAL INFORMATION

- The cost of the permit is \$345 for the year.
- The permit is valid from Aug. 15, 2023, until Aug. 15, 2024.
- Permit waitlists will go live on Aug. 16 at 8:00 AM, CST. online via the Parking website.

## OXFORD UNIVERSITY TRANSIT

Students are encouraged to utilize the Oxford University Transit system. In addition to multiple city bus lines, there are many dedicated campus bus lines. Download the Transloc app for real-time bus line and bus stop information. **[www.outransit.com](http://www.outransit.com)**



\*\*\* Use the color-coded parking zone map on the back to locate Commuter Red lots.

[www.olemiss.edu/parking](http://www.olemiss.edu/parking)

# The University of Mississippi 2023-2024 Parking Zones

## Locations of Interest:

- 1 - Student Services Building
  - 2 - Johnson Commons West
  - 3 - Student Health Center
  - 4 - Student Housing Offices (Minor Hall)
  - 5 - Computer/IT Help Desk (Weir Hall)
  - 6 - Graduate School Offices
  - 7 - Alumni Center
  - 8 - University of Mississippi Police Dept.
  - 9 - Counseling Center (Lester Hall)
  - 10 - UM Athletics Association Foundation
  - 11 - UM Athletics Administration Offices
  - 12 - Turner Center
  - 13 - Parris-Yates Chapel
  - 14 - Ole Miss Bike Shop
  - 15 - Procurement - Central Receiving
  - 16 - Human Resources (JAC)
  - 17 - South Campus Recreation Center
- Campus Recreation Main Offices  
Ole Miss Outdoors  
Parking and Transportation Offices

**South Oxford Center**  
Located at 2301 South Lamar Blvd. Proceed east on Highway 6 and take the South Lamar Blvd. exit.

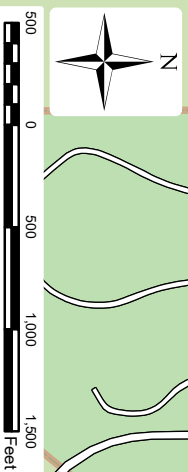
**This map is a representation of the parking allocations for the 2023-2024 academic year. It is subject to changes and is dependent on the completion of various construction projects.**

## Parking Zones 2023-2024

### Type

- Visitor
- Timed or Metered

- Inn at Ole Miss
- Faculty/Staff
- Commuter Blue
- Commuter Red
- Campus Walk
- Residential Central
- Residential East
- Residential Northwest
- Residential South
- Residential Garage
- Pavilion Garage Reserved
- Restricted
- Construction Zone



University of Mississippi  
Department of Parking and Transportation  
<http://www.olemiss.edu/parking/>

